




SHIVAKRITI
INTERNATIONAL LTD.
An ISO 9001:2008 Company



From the Desk of Chairman

It gives me great pleasure to introduce M/s. Shivakriti International Ltd. which has poised itself to strengthen Infrastructure facilities in the Country by facilitating creation of Transport Capacity for Railways, Roads and Metros in ever expanding Mega polishes. Our primary aim has been to serve as a complete Logistic Solution provider - A ONE STOP CENTRE that meets each and every logistic need.

With a successful Track record dating back to 2008, the Group has always strived to add value to our ever increasing effectiveness and efficiency to enable cost and time saving for the clients. Combining cutting edge concepts with the best technology and dedicated team of Engineers and Field Personnel, we contribute to your business successes as much as you are interested in.

We are fully geared to provide complete know how from primary stage of preliminary Field Survey, Feasibility cum Detailed Project Report to actual Construction and Physical Commissioning of the Project.

We have already completed following Major Infrastructure Projects :-

- Complete Rail Infrastructure Facilities for M/s. Innovative B2B Logistics at Kalamboli, Navi Mumbai (Maharashtra)
- Railway Siding with SSI for M/s. OCL India Ltd. (Dalmia Group) at Byree near Cuttack (Orissa)
- Railway Siding for M/s. Bombardier Transportation India at Savli near Vadodara (Gujarat)
- Complete Signalling and Telecommunication Works for Rosa Thermal Power Project Siding at Rosa (U.P.)
- Design, Supply and Execution of Indoor Works for RRI at Rewari (Haryana)

My experience as Director Project and one of the Promoter of M/s. Kalindee Rail Nirman (Engineers) Ltd., from 1984 in successful execution of project all over Country in Railway Signalling, Telecommunication, Earth Work, Bridges, Track Linking, Ballast less Track for Delhi Metro has enabled our company to get Rs. 70 Crores Turnkey Project of Providing Railway Line including Siding and Intra Plant Network at Rampur Agucha Mines for M/s. Vedanta. We are presently executing following works :-

- Construction of Railway Siding at Borkhedi near Nagpur for M/s. ETA Engineering Pvt. Ltd.
- Construction of Railway Siding at Sahnewal, Ludhiana for M/s. Innovative B2B Logistics Solutions Ltd.
- Track Work for 55 Km. long Doubling from Adipur to Mundra For M/s. Adani Projects.
- Electronic Interlocking (SSI) at Ankleshwar Station of Western Railway
- Outdoor Signalling Work for RRI at Viramgam of Western Railway.
- Electronic Interlocking (SSI) at Raja Ki Mandi Station (Agra) of North Central Railway.
- Complete Design and Execution of Signalling Works at Raipur of South East Central Railway.
- Interlocking of 60 Level Crossings of Moradabad Division of Northern Railway.
- Signalling work for Doubling of Track between Rewari and Alwar of North Western Railway.

Business Outlook

Indian Railways are committed to improve its Infrastructure by developing Dedicated Freight Corridor, Construction of High Speed Corridors and Public Private Partnership in Development of World Class Stations and Private Sidings for Port Connectivity as well as Container Transportation. Similarly Construction of Metros in Large Metro polishes and up coming Mega Cities are bound to open new frontiers in Infrastructure Development.

We are committed to build sustainable and scalable business growth. We are committed to Optimize use of resources with consistent effort to Control cost by judicious use of Manpower, Machinery and Technology. We are also committed to Ecological and Environmental improvement.

Thanking You,

S.D. SHARMA
Chairman Cum Managing Director

Vision

To provide complete solutions for the exponentially growing “**Infrastructure**” which is **Tomorrow's economy, Tomorrow's dreams or Simply Tomorrow.**

We intend to facilitate the **Transportation Movement** by creating the best of **Infrastructure** through **Quality** which will also bring **Cost Efficiency** by keen recognition of **Challenges Involved** and thus providing more **Reliability** for the **Masses.**



Mission

We want to
Build Bridges with
Cement of Bondings for
Laying Track that would
Welcome **Masses** who Feel
That we would reach our **Destination**
In the most **Safest & Economic Mode**

Quality Policy

“SHIVAKRITI INTERNATIONAL LTD.” strives to facilitate transportation movement across the globe through continual improvement in infrastructure, cost efficiency, focusing on regular up-gradation of skills and knowledge of its manpower at all levels thus providing high degree of reliability for the masses by fail safe installation.



Certificate of Registration



**This is to certify that the
Quality Management System of :**

SHIVAKRITI INTERNATIONAL LTD.

Site : H-49-A, Tulsi Marg, Bani Park, Jaipur- Rajasthan,
Registered Office : D-224, Tulsi Marg, Bani Park, Jaipur-Rajasthan

has been assessed and found compliant with the requirements of :

ISO 9001:2008

**Approval is hereby granted for registration on the proviso that the
certification rules and conditions are observed at all times.**

Certification Scope:

SUPPLY, INSTALLATION, TESTING AND COMMISSIONING OF RAILWAY SIGNALING SYSTEM, OFC & QUAD CABLE BASED COMMUNICATION SYSTEM & MICROVAWE TOWERS, LAYING OF RAILWAY TRACKS, PROVIDING COMPLETE RAILWAY INFRASTRUCTURE FACILITIES FOR PRIVATE RAILWAY SIDING & MAINTENANCE OF THE SAME, AND OTHER ALLIED CIVIL WORKS ON TURN KEY BASIS AND UNDERTAKING PROJECTS PERTAINING TO WASTE MANAGEMENT AND PIPELINES.

Certificate No.: IJA-0431.09

Original Issue Date: 27 March 2009

Issue Date: 19 July 2010

Expiry Date: 26 March 2012

Kamal Deep Dalela
Kamal Deep Dalela

Authorised Signature

Moody International Certification Ltd.

www.moodyint.com

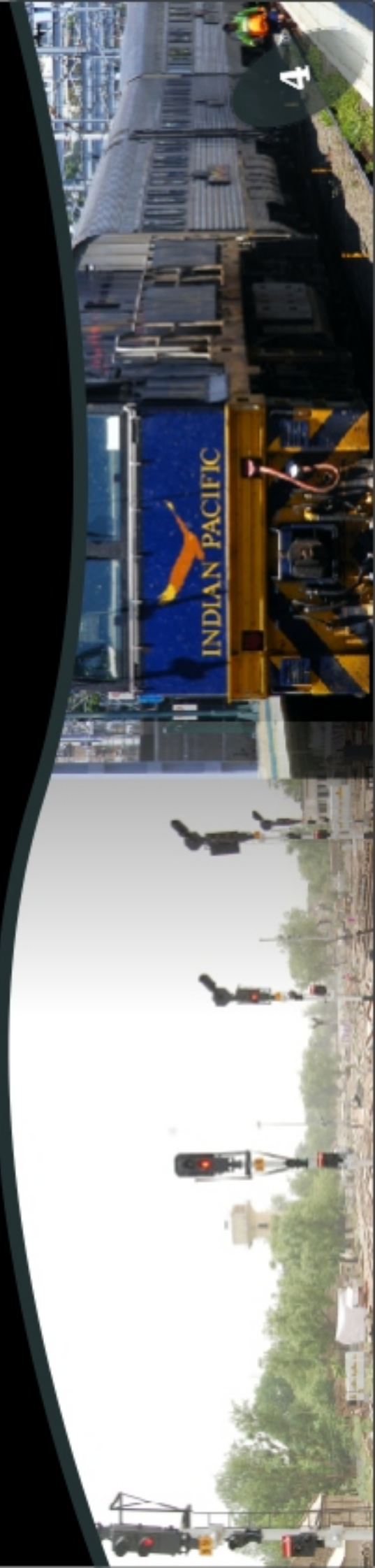
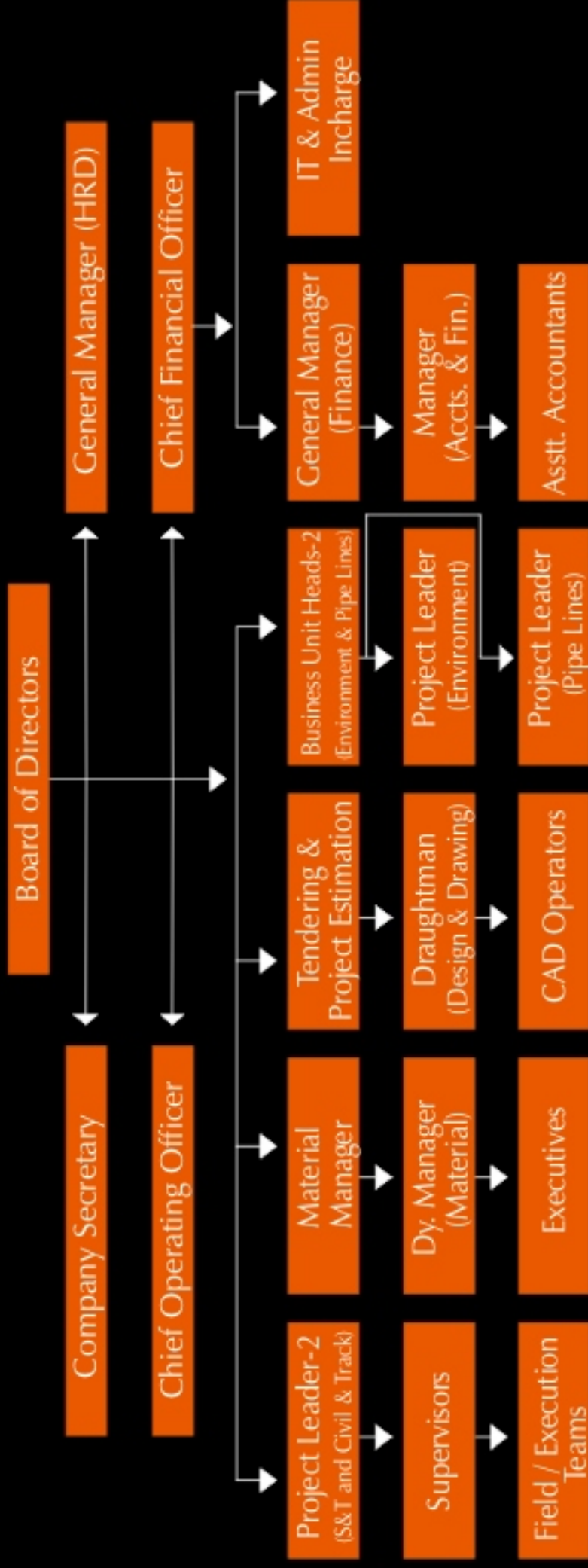
For any Queries contact: Moody International Certification India Limited (011-47132900)

The use of the Accreditation Mark indicates accreditation in respect of those activities covered by the Accreditation Certificate 014.
The certificate remains the property of Moody International Certification Limited to whom it must be returned on request.



014

Organisation



Business Sector

Construction of infrastructure facilities for Surface Transport and Telecommunication Systems Including :-

- Railways - Track, Signalling and Telecommunication, Buildings Bridges, Fixed Installation for electric traction, Manufacturing of Signalling Items.
- Metro Rail Systems - Track, Signalling & Telecommunication.
- Telecommunication - Optic Fiber, Copper Cable and Wireless Networks.
- Civil Works - Buildings, Bridges, Roads and Earth Work.
- Environment - Solid Waste Treatment with Energy Recovery, Sewage, Water & Lake Water Treatment Plants.
- Pipeline - Water, Gas & Oil Distribution.



Competencies



Design, Installation, Testing, Commissioning

- Railway Track & Turn-Outs
- Railway Signalling Installations
- Telecommunication Installations
- Associated Civil Works
- Bridges
- Structures
- Earthwork
- Environment
- Pipeline

Materials & Equipments

- Procurement, Supply, Clearance
- Logistical Support
- Transport, Storage, Security, Manpower

Survey, Design & Consultancy

Liaison & Co-Ordination

Sourcing Capabilities for Track

- Rail, Points & Crossings
- Rail Sleepers & Fittings
- Welding Materials
- Joints S/E & Insulated
- Ballast Supply
- Transport & Stacking
- Flash Butt Welding
- Thermit Welding
- Ultrasonic Testing
- Cutting & Drilling



Track Construction - Capabilities

- Main Line
- Yards
- New Lines
- Doubling
- Gauge Conversion
- Ballasted Track
- Ballast-Less Track
- Private Sidings

In addition to the above we also undertake Maintenance & Operation of Private Sidings.

Resources

Plant and Machinery :

TRACK AND CIVIL WORKS

- Motorized and Manual Rail Diplory
- Motorized Ballast Training Vehicles
- Rail Tensors
- Motorized and Push Trolleys
- Abrasive Rail cutting Machine
- Rail Grinder
- Hole Drilling Machine
- Hydra Cranes
- Spreading Beam for Handling Rails
- Track Welding Equipment
- Torque Wrenches and Jim Crows
- Rail Linking Tools
- Excavators
- JCB
- Poclain
- Grader
- Vibratory & Sheep Foot Rollers
- Tippers and Dumpers
- Portable Batching Plant
- Concrete Pump
- Concrete Transit Mixer
- Paver



Sourcing Capabilities for S & T

Design, Installation, Testing and Commissioning of :-

- Alterations to existing Signalling and Telecom Installations
- Railway Signalling Installations
- Telecommunication Installations
- Railway Electrification

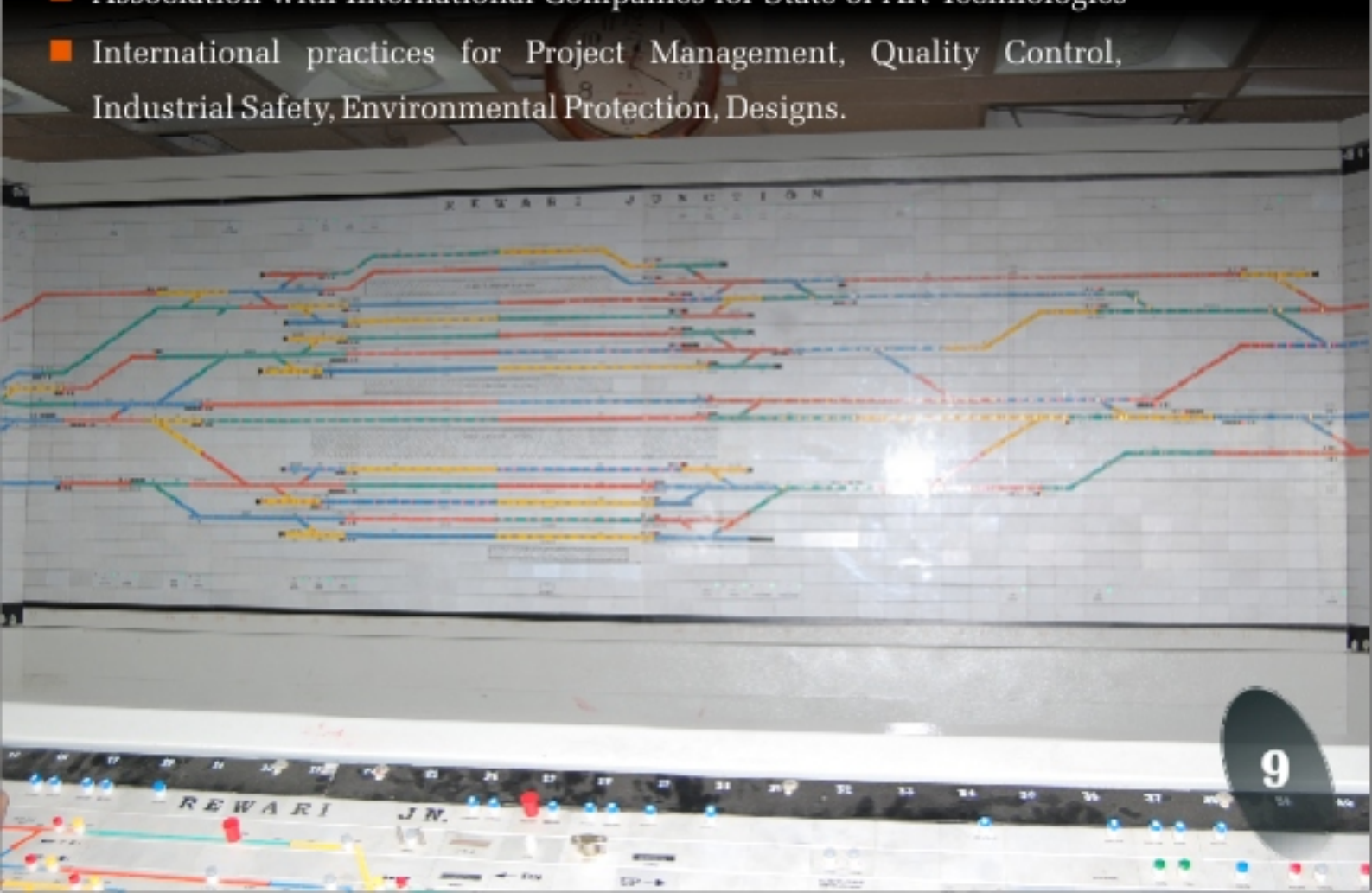
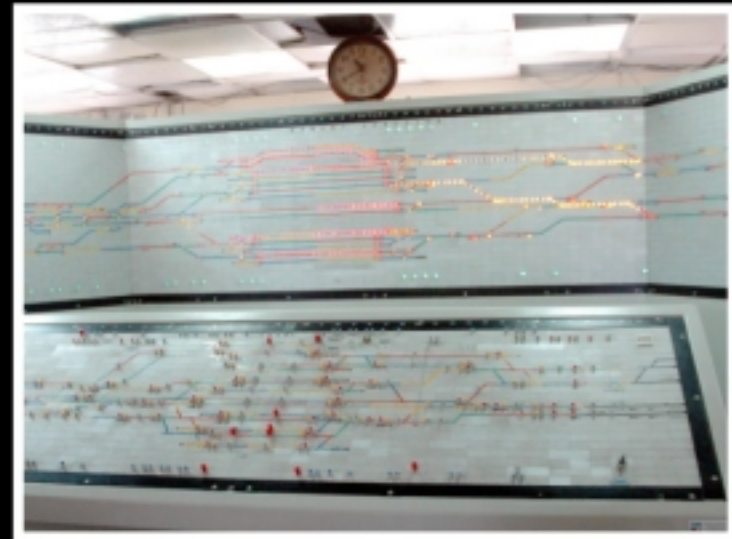
Materials & Equipments

- Procurement & Supply
- Clearance from Ports
- Logistical Support

Liaison & Co-ordination at all Levels

Others

- Maintenance and Warranty Support
- Simultaneous Management of Projects at Different Locations.
- Association with International Companies for State of Art Technologies
- International practices for Project Management, Quality Control, Industrial Safety, Environmental Protection, Designs.



Resources

Plant and Machinery :

SIGNALLING AND TELECOMMUNICATION WORKS

- Powermeter
- Frequency Generator
- Capacitance Measuring Instrument
- Resistance Measuring Instrument
- Rail Drilling Machine
- Horizontal Direct Drilling Machine
- Track Bonding Machine
- Welding Set along with Generator
- Excavator
- Concrete Mixture and Related Equipment
- Vibrators
- Transporting Equipment
- Earth Tester of Sorts
- Insulation Megger Tester 500V
- Precision Multi Meter (Digital)
- Track Shunt Resistance
- Tong Tester
- Fault Locator



We strongly believe that it is the **People** who can make anything and everything happen and not the Organization. Organization is made up of people only & hence at **Shivakriti** we are confident that with our devoted team of Engineers & Members, we can provide state of the art safety for the **Masses** without compromising on **Quality**.



SHIVAKRITI
INTERNATIONAL LTD.
An ISO 9001:2008 Company

created to provide the

Track to Escort to your Destination

Thanks

*We would appreciate to answer your queries related to
Railway Infrastructure, Roads, Bridges,
Environment, Pipeline etc.
Which can be forwarded to
Info@shivakriti.net*



Correspondence Address :
H-49-A, Tulsi Marg, Bani Park,
Jaipur- 302 016
Rajasthan- INDIA
Tel: + 91 141 40 40 479
Fax : + 91 141 40 24 361
E-mail : info@shivakriti.net

Corporate Office :
Corporate Park
Unit No. 707-710,
7th Floor, Ajmer Pulia,
Jaipur – 302 006, Rajasthan – India
Tel : + 91 141 40 40 479
Fax : + 91 141 40 24 361
E-mail : info@shivakriti.net

Branch Office :
C-890, 1st Floor,
Sushant Lok,
Phase-I,
Gurgaon - 122 002
Haryana – INDIA

W W W . S H I V A K R I T I . N E T